



Seirbhís Sláinte  
Níos Fearr  
á Forbairt

Building a  
Better Health  
Service



# Weekly Epidemiological Report on COVID-19 cases aged 0-18 years in Ireland Week 36, 2021

Health Protection Surveillance Centre, HPSC  
COVID-19 Epidemiology Team, 13/09/2021

## Dates to note:

- Week 36 2021 (5<sup>th</sup> to 11<sup>th</sup> September 2021)
- Week 10 2020 (1<sup>st</sup> to 7<sup>th</sup> March 2020) – The beginning of the pandemic in Ireland
- Wave 4 of the pandemic in Ireland (Week 26 2021 (week commencing 27/06/2021) to present)
- Please see next slide for additional dates to note

**Note:** The epidemiological weeks in this report, run from Sunday to Saturday, please refer to the [surveillance resources](#) on the HPSC website for a complete list of epidemiological weeks with start and end dates.

**Note:** Data were extracted from the Computerised Infectious Disease Reporting (CIDR) system on 13/09/2021 and 14/09/2021. These data are provisional and subject to ongoing review, validation and update. As a result, figures in this report may differ from previously published figures.

# Summary of important dates for childcare facilities (CCFs) and schools

Also see Figures 1a and 1b for summary of key dates



Epidemiological Week*	Epi week start date	School and childcare facility closures/openings
Week 11, 2020	08/03/2020	All Schools and Childcare facilities close.
Week 27, 2020	29/06/2020	Childcare facilities re-open.
Week 35, 2020	23/08/2020	Schools re-open for 2020/21 academic year.
Week 52, 2020	20/12/2020	All schools close for on-site education. Childcare facilities continue with reduced capacity.
Week 6, 2021: Phased re-opening of schools commences	07/02/2021	Partial re-opening of special education schools.
Week 9, 2021	28/02/2021	Junior classes in primary school (junior infants to 2 <sup>nd</sup> class) and leaving certificate students in secondary school return. Childcare facilities return to full capacity.
Week 11, 2021	14/03/2021	The remaining primary school classes and 5 <sup>th</sup> year students in secondary school return.
Week 13, 2021	28/03/2021	All schools close for Easter holiday
Week 15, 2021	11/04/2021	All schools re-open after Easter holiday. The remaining secondary school classes return.

\*Note: The epidemiological weeks in this report, run from Sunday to Saturday, please refer to the [surveillance resources](#) on the HPSC website for a complete list of epidemiological weeks with start and end dates.

# Summary of important dates for childcare facilities (CCFs) and schools: Continued

Also see Figures 1a and 1b for summary of key dates



<b>Epidemiological Week*</b>	<b>Epi week start date</b>	<b>School and childcare facility closures/openings</b>
<b>Week 21, 2021</b>	23/05/2021	End of term for most post-primary schools to facilitate beginning of state examinations.
<b>Week 25, 2021</b>	20/06/2021	End of term for most primary schools.
<b>Week 26, 2021</b>	27/06/2021	Beginning of wave 4 of the pandemic in Ireland.
<b>Week 30, 2021</b>	25/07/2021	Vaccine registration opens for 16 and 17 year olds.
<b>Week 32, 2021</b>	08/08/2021	Vaccine registration opens for 12-15 year olds.
<b>Week 35, 2021</b>	29/08/2020	Schools re-open for 2021/22 academic year.

\*Note: The epidemiological weeks in this report, run from Sunday to Saturday, please refer to the [surveillance resources](#) on the HPSC website for a complete list of epidemiological weeks with start and end dates.

## 1. Outbreak Definition

- There is a cluster/outbreak, with two or more cases of laboratory confirmed COVID-19 infection regardless of symptom status. This includes cases with symptoms and cases who are asymptomatic.

**OR**

- There is a cluster/outbreak, with two or more cases of illness with symptoms consistent with COVID-19 infection (as per the COVID-19 case definition), and at least one person is a confirmed case of COVID-19

**The detection of a case or the declaration of an outbreak in a school or childcare facility does not of itself indicate that transmission occurred within the school or facility; clusters of cases may be detected within a particular setting despite exposure and transmission having occurred elsewhere**

## 2. Age Breakdown

- Cases were broadly categorised by age groups that are associated with different school types: 0-4 years (pre-school), 5-12 years (primary school) and 13-18 years (secondary school). However, it is likely that there is some overlap in the ages of children attending all school types and children do not necessarily attend the school type indicated by their age grouping.

Between March 1<sup>st</sup> 2020 and September 11<sup>th</sup> 2021, a total of **366,142** confirmed COVID-19 cases were notified on CIDR:

- **14,242 (4%)** of these cases were pre-school aged children (aged 0-4 years)
- **27,490 (7.5%)** were primary school aged children (aged 5-12 years)
- **32,454 (9%)** were secondary school aged children (aged 13-18 years)
- **291,905 (80%)** were adults (aged over 18 years)
- Age was unknown for 51 cases

A total of **74,186** confirmed cases of COVID-19 in the 0-18 year old population represents **5.9%** of the 0-18 population in Ireland\* and **20.3%** of all confirmed COVID-19 cases in Ireland reported between week 10 2020 and week 36 2021

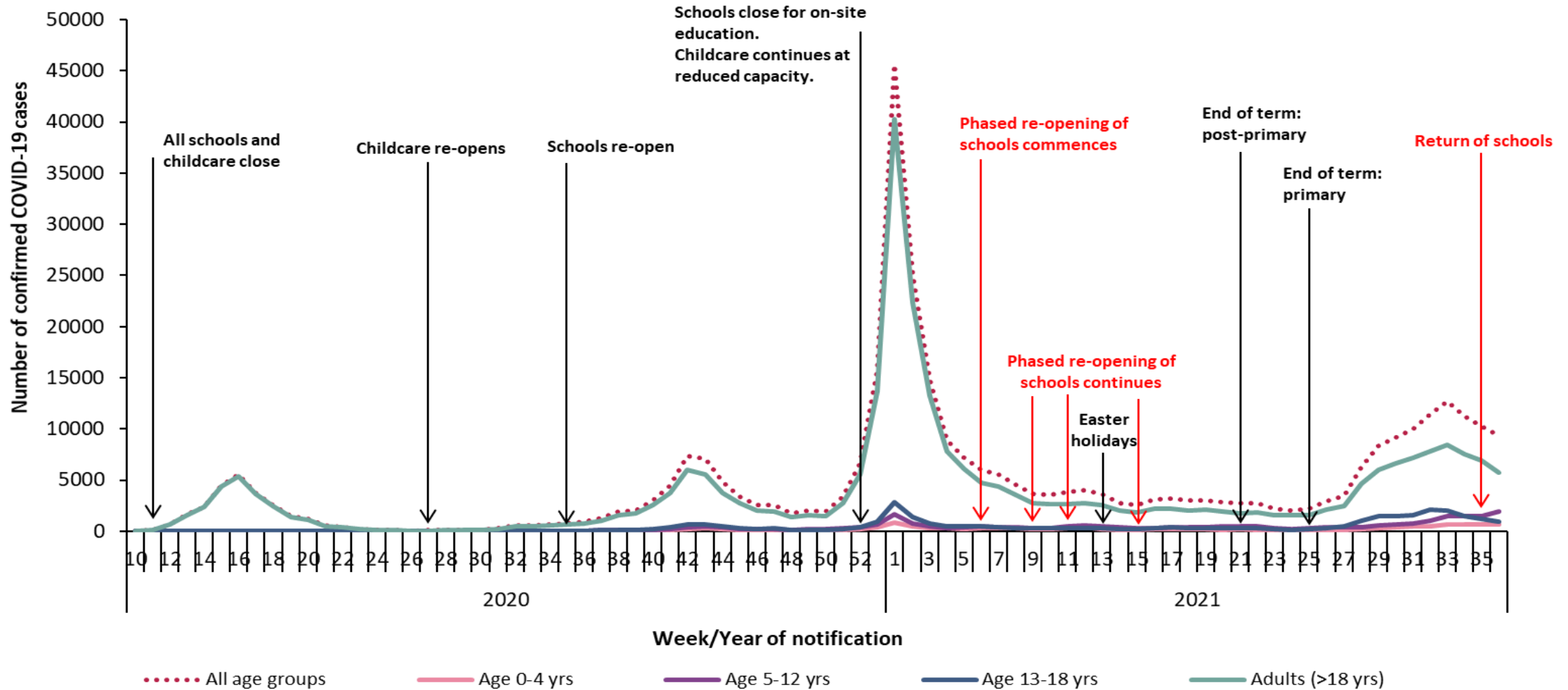
*\*Age-specific population data were taken from Census 2016*

## Summary of trends among 0-18 year olds, wave 4 2021



- The majority of schools had closed for summer before wave 4 of the COVID-19 pandemic in Ireland commenced (week 26 2021).
- The incidence of COVID-19 in all children aged 0-18 years increased during wave 4, reflecting general increases in the disease incidence in the country at that time.
- The proportion of cases among children aged 0-18 years also increased during this time period, however this is likely to be associated with increased vaccination rates among older age groups.
- In week 30 (week commencing 25/07/2021), COVID-19 vaccines began to be offered to those aged under 18 years; and a downturn in disease incidence in the vaccine-eligible cohort has been observed in recent weeks.
- The rate of infection among 5-12 year olds increased from 266.3/100,000 in week 35 to 350.3/100,000 in week 36. Similar increases were observed in this age group when primary schools re-opened in September 2020 and in February/March 2021 and may reflect increased testing of mildly symptomatic and asymptomatic children.
- The 2021/22 academic year commenced for the majority of students during week 35 2021. Forty outbreaks associated with schools were reported to HPSC during week 36 2021, an increase from the revised number of 17 outbreaks reported in week 35 2021. The increase in the number of childcare outbreaks continued in week 36. This may be due to more children returning to childcare alongside the re-opening of schools.
- Increases in the incidence among school-aged children or declaration of outbreaks in a childcare facility or school does not of itself indicate that transmission occurred within the school or childcare facility, as exposure and transmission may have occurred elsewhere.

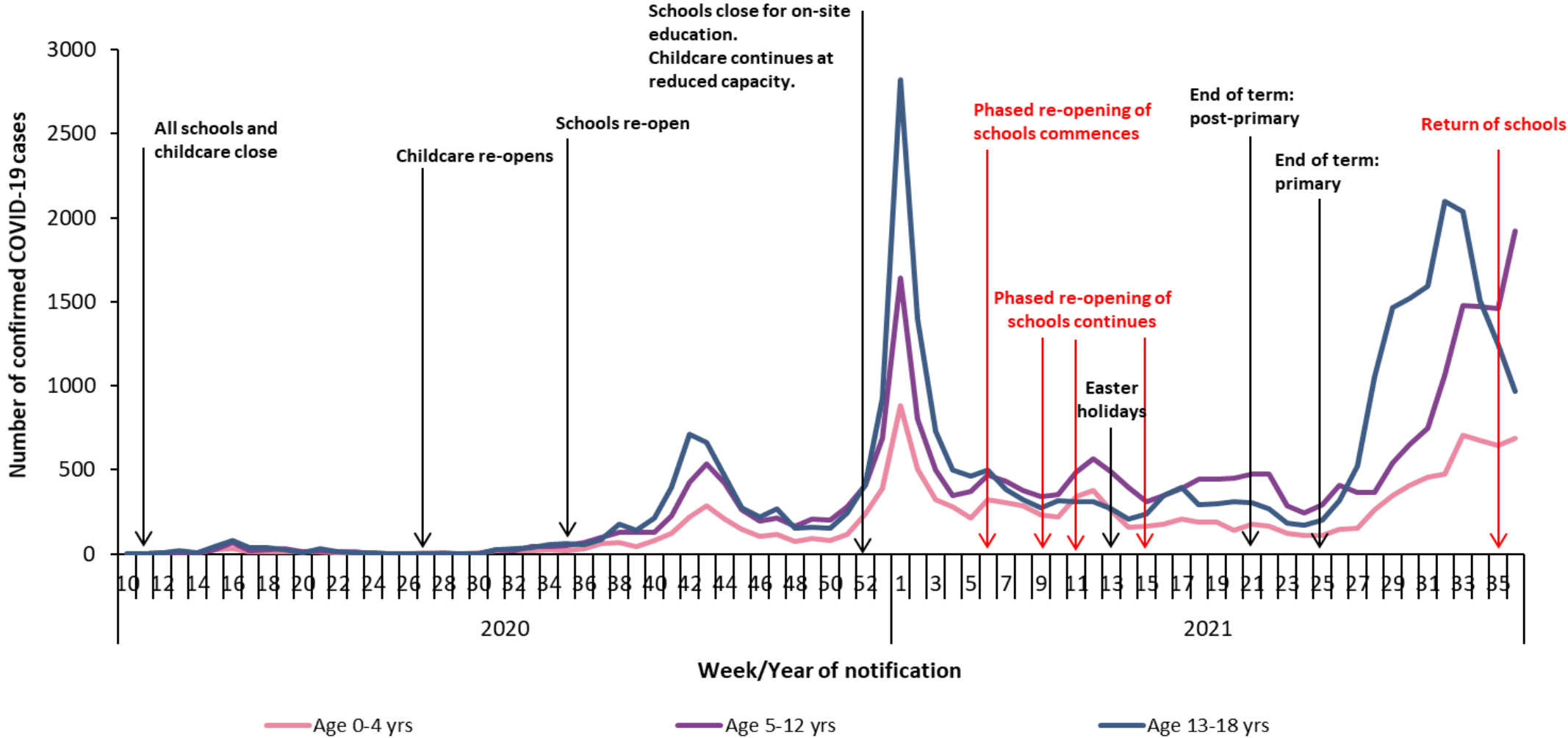
# Number of confirmed COVID-19 cases across age groups, week 10 2020 - week 36 2021



Please note that school and CCF closures/reduction in capacity have reflected patterns of COVID-19 in the general population, rather than the number of cases in schools and CCFs.

**Figure 1a:** Number of confirmed COVID-19 cases by age group in Ireland between week 10, 2020 and week 36, 2021

# Number of confirmed COVID-19 cases in children aged 0-18 years, week 10 2020 - week 36 2021

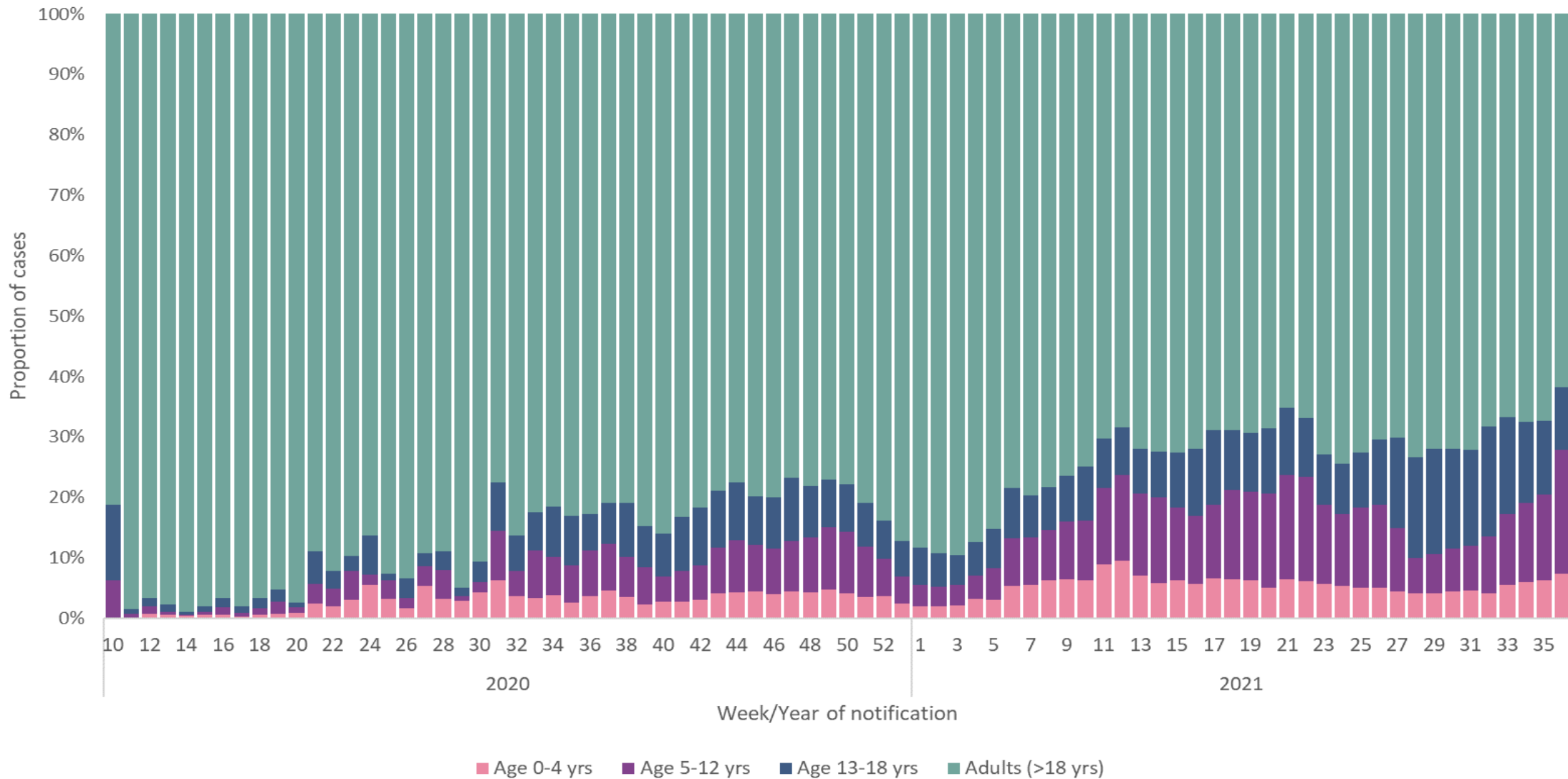


Please note that school and CCF closures/reduction in capacity have reflected patterns of COVID-19 in the general population, rather than the number of cases in schools and CCFs.

**Figure 1b:** Number of confirmed COVID-19 cases by age group in children aged 0-18 years in Ireland between week 10, 2020 and week 36, 2021



# Proportion of confirmed COVID-19 cases across age groups, week 10, 2020 – week 36, 2021

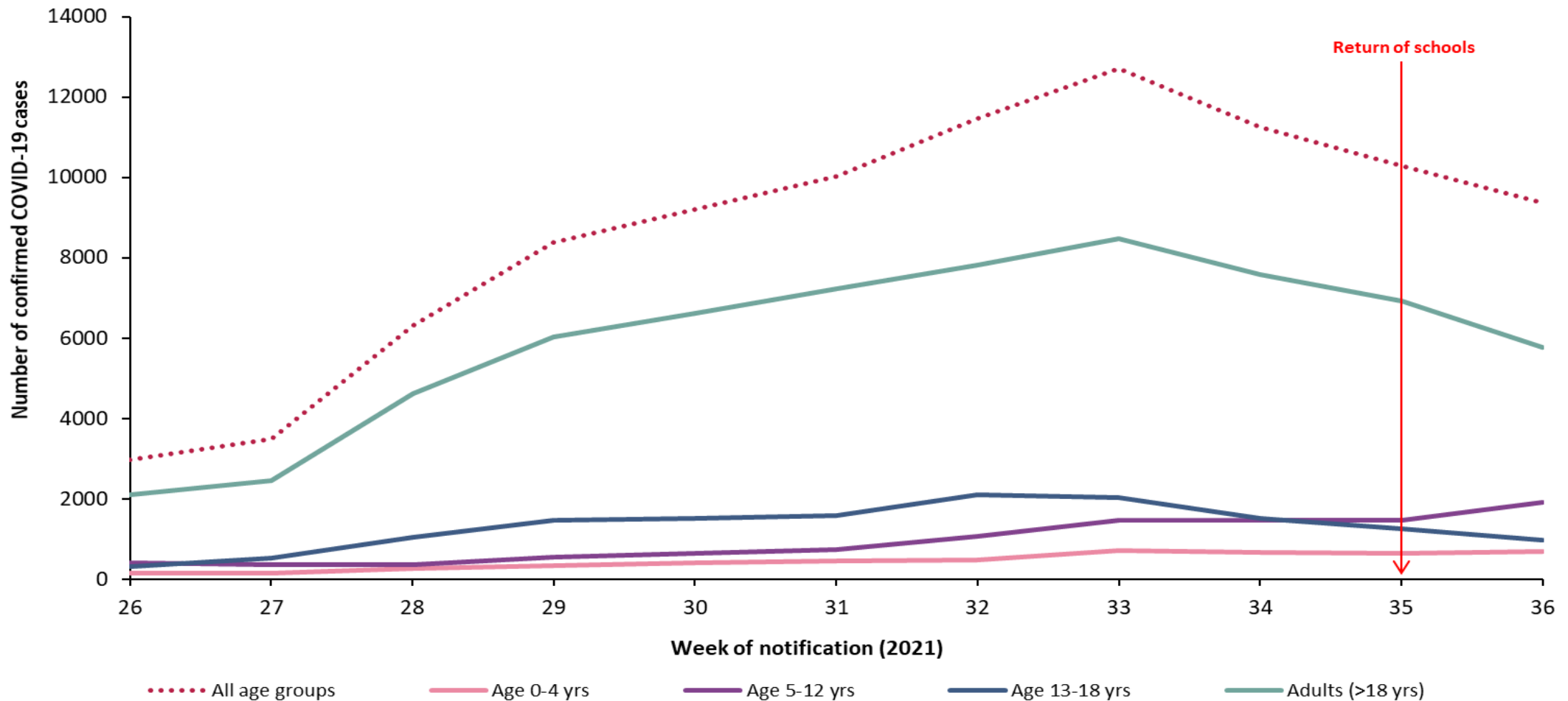


**Figure 2:** Proportion of confirmed COVID-19 cases by age group in Ireland between week 10, 2020 and week 36, 2021

# Number of confirmed COVID-19 cases across age groups, wave 4 (week 26 – 36, 2021)



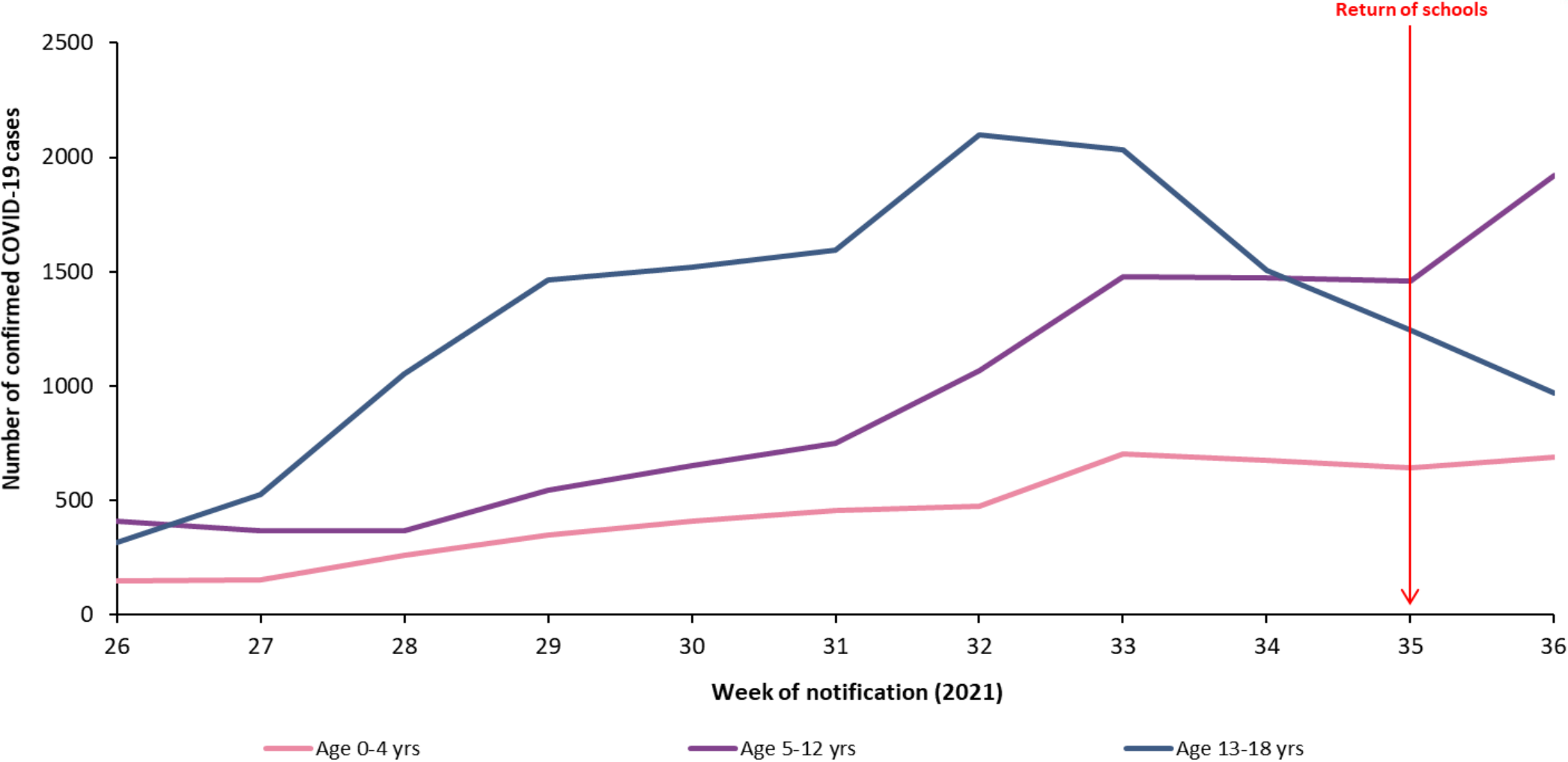
Primary and post-primary school terms ended for the summer prior to the beginning of wave 4 of the pandemic in Ireland.



Please note that school and CCF closures/reduction in capacity have reflected patterns of COVID-19 in the general population, rather than the number of cases in schools and CCFs.

**Figure 3a:** Number of confirmed COVID-19 cases by age group in Ireland between week 26 and week 36, 2021

# Number of confirmed COVID-19 cases in children aged 0-18 years, wave 4 (week 26 – 36, 2021)



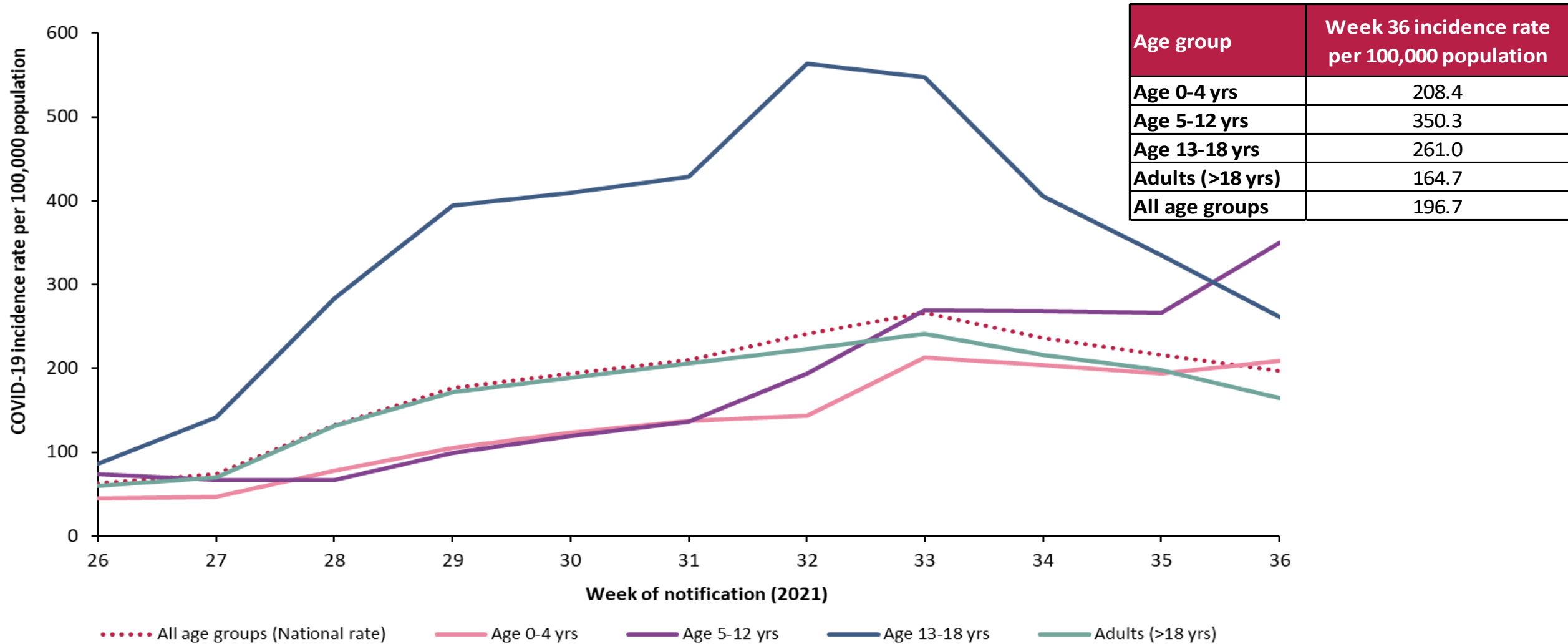
Please note that school and CCF closures/reduction in capacity have reflected patterns of COVID-19 in the general population, rather than the number of cases in schools and CCFs.

**Figure 3b:** Number of confirmed COVID-19 cases by age group in children aged 0-18 years in Ireland between week 26 and week 36, 2021

# COVID-19 weekly incidence\* rate across age groups, wave 4 (week 26 - week 36 2021)



\*Age-specific population data were taken from Census 2016

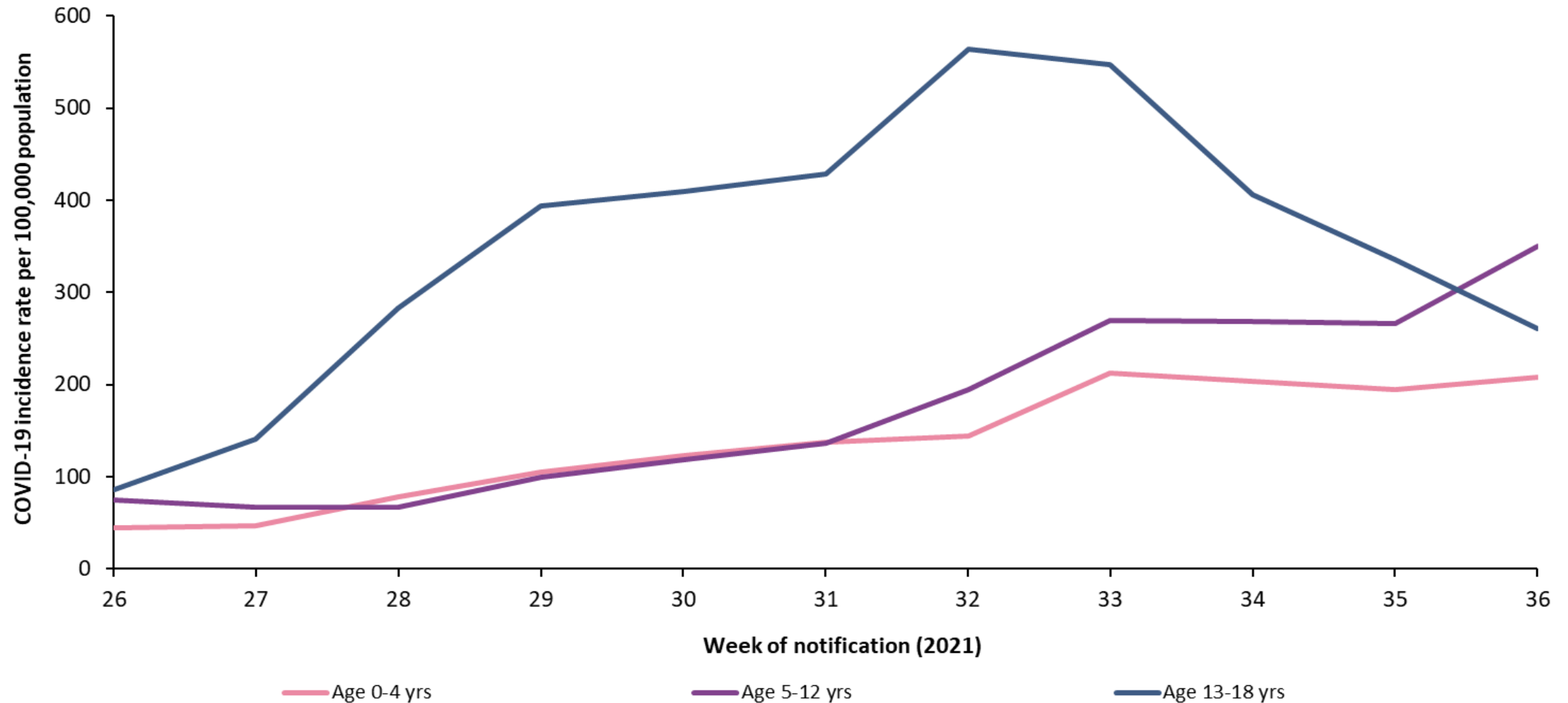


**Figure 3c:** Weekly age-specific incidence rates of confirmed COVID-19 cases per 100,000 population by age group in Ireland between week 26 and week 36, 2021

# COVID-19 weekly incidence\* rate in children aged 0-18 years, wave 4 (week 26 - week 36 2021)



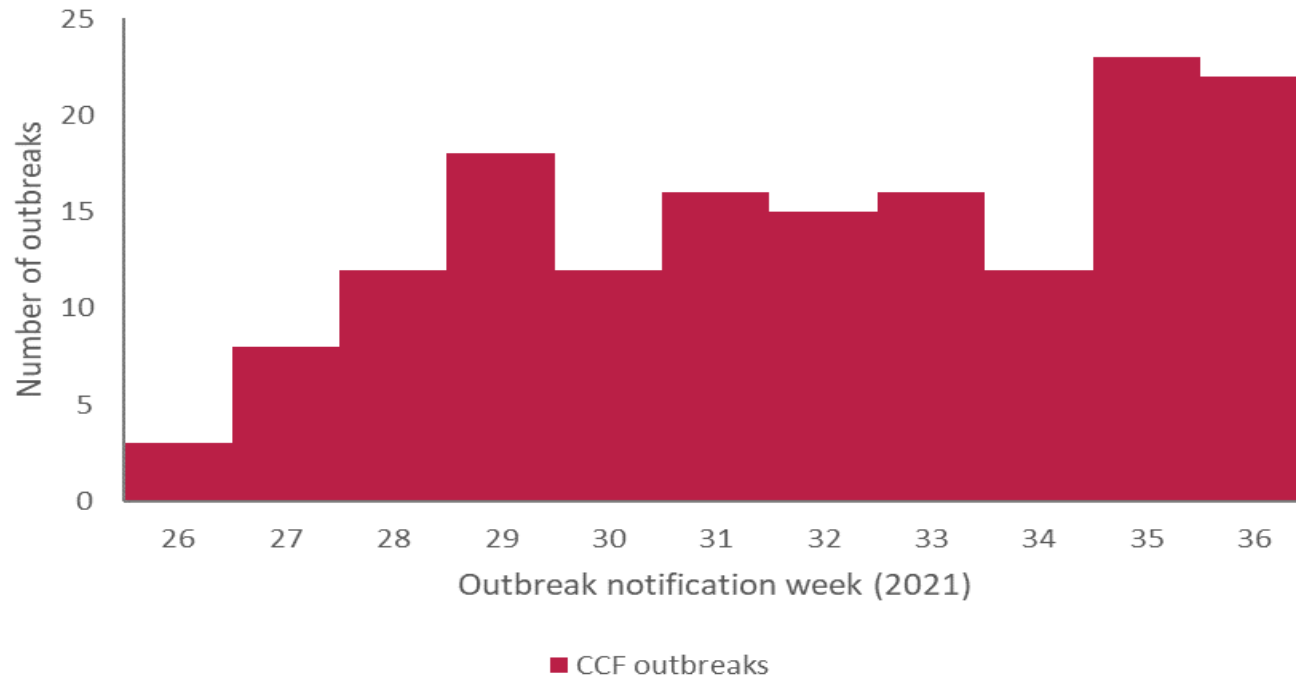
\*Age-specific population data were taken from Census 2016



**Figure 3d:** Weekly age-specific incidence rates of confirmed COVID-19 cases per 100,000 population by age group in children aged 0-18 years only in Ireland between week 26 and week 36, 2021

## Childcare facility outbreaks:

- 552 childcare facility outbreaks, involving 2,930 linked confirmed cases, were notified to HPSC since week 32 2020
- 157 childcare facility outbreaks, involving 740 linked confirmed cases, were notified to HPSC during wave 4
- 22 childcare facility outbreaks, involving 80 linked confirmed cases, were newly reported to HPSC in week 36

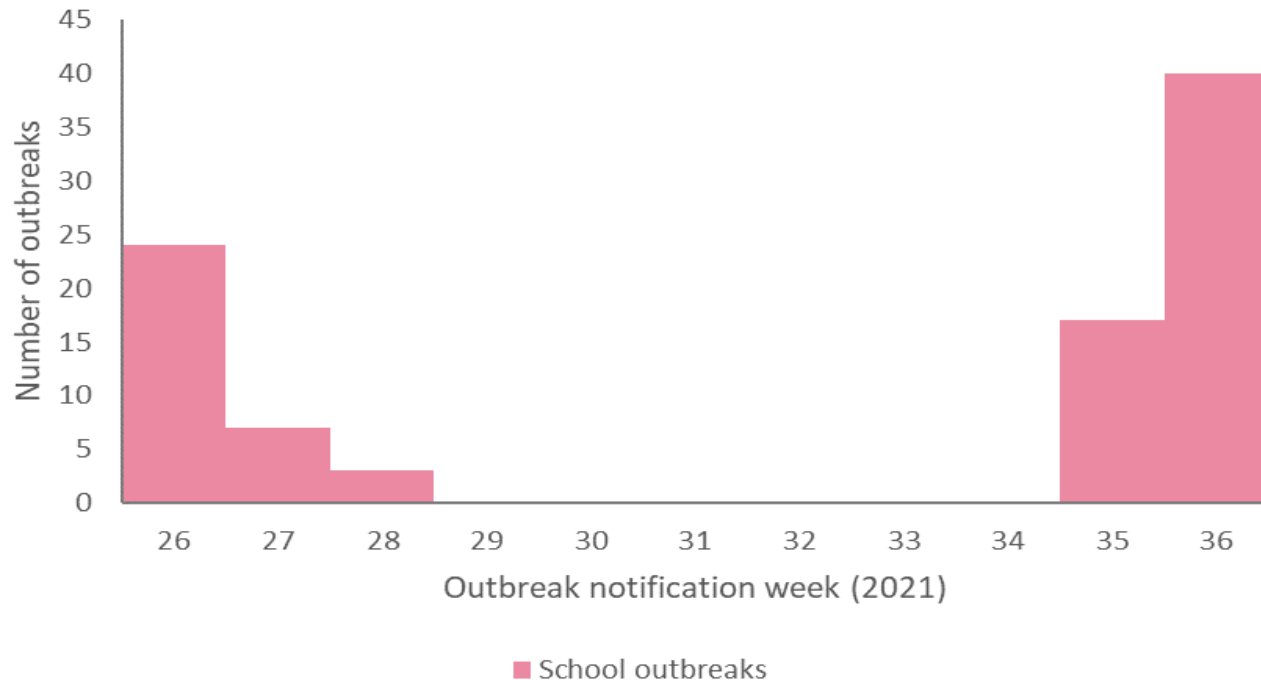


**Figure 4:** Number of COVID-19 outbreaks associated with staff and children in childcare facilities during wave 4 of the pandemic in Ireland (week 26 to week 36, 2021)

Please note that there are delays to the notification of outbreaks and linking of outbreak-associated cases on CIDR due to the May 2021 cyber-attack on the HSE IT system. For this reason, the number of outbreaks reported may be an underestimate. Furthermore, the number of linked cases was correct at the time of reporting to HPSC but the outbreak may have grown in size since reporting.

## School outbreaks:

- 815 school outbreaks, involving 3,697 linked confirmed cases, associated with the 2020/21 academic year
- 91 school outbreaks, involving 457 linked confirmed cases, were notified to HPSC during wave 4
- 57 school outbreaks, involving 278 linked confirmed cases, associated with the 2021/22 academic year
- 40 school outbreaks, involving 191 linked confirmed cases, were newly reported to HPSC in week 36



**Figure 5:** Number of COVID-19 outbreaks associated with staff and children in schools during wave 4 of the pandemic in Ireland (week 26 to week 36, 2021)

Please note these data incorporate outbreaks associated with both the 2020/21 and 2021/22 academic year.

**Please note that there are delays to the notification of outbreaks and linking of outbreak-associated cases on CIDR due to the May 2021 cyber-attack on the HSE IT system. For this reason, the number of outbreaks reported may be an underestimate. Furthermore, the number of linked cases was correct at the time of reporting to HPSC but the outbreak may have grown in size since reporting.**

# Week 36 Summary: Cases and outbreaks in current week and in wave 4 of the pandemic in Ireland, week 26 - week 36 2021



Confirmed COVID-19 cases: Age group	Week 36		Wave 4 (Week 26 - Week 36)	
	Number of confirmed cases <sup>1</sup>	Proportion of all cases (%)	Number of confirmed cases <sup>1</sup>	Proportion of all cases %)
0-4 yrs	691	7.4	4,970	5.2
5-12 yrs	1,922	20.5	10,490	11.0
13-18 yrs	970	10.4	14,332	15.0
>18 yrs	5,782	61.7	65,642	68.8
<b>Total</b>	<b>9,365</b>	<b>100.0</b>	<b>95,434</b>	<b>100.0</b>

Outbreaks: Outbreak Location	Week 36			Wave 4 (Week 26 - Week 36)		
	Number of outbreaks	Number of confirmed cases linked to outbreaks	Range in number of linked cases <sup>2</sup>	Number of outbreaks	Number of confirmed cases linked to outbreaks	Range in number of linked cases <sup>2</sup>
Childcare facility	22	80	0 - 11	157	740	0 - 25
School	40	191	1 - 17	91	457	1 - 22
<b>Total</b>	<b>62</b>	<b>271</b>	<b>0 - 17</b>	<b>248</b>	<b>1,197</b>	<b>0 - 25</b>

1. Excludes cases of unknown age.

2. All confirmed cases may not yet have been linked to the outbreak on CIDR. Ranges in number of linked cases that contain "0" currently have no linked cases on CIDR or the aggregate number of associated cases has not been specified.

**Please note that there are delays to the notification of outbreaks and linking of outbreak-associated cases on CIDR due to the May 2021 cyber-attack on the HSE IT system. For this reason, the number of outbreaks reported may be an underestimate. Furthermore, the number of linked cases was correct at the time of reporting to HPSC but the outbreak may have grown in size since reporting.**



**Please refer to the Health Protection Surveillance (HPSC) website for specific reports on**

- [14 Day report](#) epidemiology of COVID-19 in Ireland
- [Outbreaks/clusters](#) in Ireland COVID-19 weekly report
- [Weekly report](#) on the epidemiology of COVID-19 in Ireland
- [Schools and Childcare facilities COVID-19 mass testing](#) in Ireland weekly report

**Acknowledgements**

Sincere thanks are extended to all those who are participating in the collection of data and reporting of data used in these reports. This includes the HSE COVID-19 Contact Management Programme (CMP), staff in ICU units, notifying clinicians, laboratory staff, Departments of Public Health, nurses, surveillance scientists, microbiologists and administrative staff.

**Report prepared by COVID-19 Epidemiology Team, HPSC**

# Technical Notes

## 1. Data Source

- Data are based on statutory notifications and were extracted from Computerised Infectious Disease Reporting (CIDR) system. Data are provisional and subject to ongoing review, validation and update. As a result, figures in this report may differ from previously published figures.

## 2. Population data

- Population data were taken from Census 2016. Data were aggregated into the following age groups for the analysis: 0-4 years, 5-12 years, 13-18 years, >18 years.

## 3. Outbreak recognition date

- Due the cyber-attack on the HSE IT system in May 2021 there have been delays in notification of outbreaks on CIDR. For this reason, outbreaks notified after week 19 2021 are analysed by “Outbreak recognition date”, where available, rather than the date the outbreak was notified on CIDR.

## 4. Outbreak size

- For outbreaks notified prior to week 19 2021, the number of linked confirmed cases/outbreak size is based on laboratory confirmed cases linked to an outbreak in CIDR. For outbreaks notified since week 19 2021, the number of associated cases/outbreak size is based either on laboratory confirmed cases linked to an outbreak in CIDR **OR** on an aggregate number of cases provided at the time of outbreak notification, whichever number is largest. The number of associated cases was correct at the time of reporting to HPSC but outbreaks may have grown in size since the time of reporting.